

SCIENCE
MEETS
PASSION



OUR HISTORY

Emilia-Romagna, 1964.

The history of C-Tech begins in this Italian region that, over the years, has become globally known thanks to the work and creativity of its industries and its people.

Our origins started exactly there, with a precision machining workshop. At the beginning, we produced high precision parts for the automotive, aeronautical and the medical device industries. Then, due to our experience in producing orthopedic implants, in 1966 we received our very first order for a dental implant.

Following the increasing success of our products, we specialized in the production, treatment, packaging and certification of dental implants for other companies. Our vast expertise in the design, production and certification of implants finally resulted in the creation of our own brand in 2010.

Since then, we quickly expanded and our production facilities are now completely dedicated to satisfying our growing market demands.

Currently C-Tech offers 4 different implant lines, its own CAD/CAM milling center, as well as guided surgery planning services.



OUR TERRITORY

From automotive design and manufacturing to high precision mechanics, there are plenty of world-class examples of excellence in Emilia-Romagna region's industrial system, such as agricultural machinery, ceramic machinery, oil hydraulics and electro-medical equipment.

C-Tech headquarters are based in an area internationally known as Motor Valley: brands like Ferrari, Maserati, Lamborghini and Ducati are just the cream of Emilia-Romagna highly specialized industrial system, where a huge number of companies have achieved global success thanks to a constant commitment to both passion and creativity.

As well as for the Motor Valley, the Metropolitan area of Bologna – in which C-Tech is specifically located – is also increasingly establishing itself as the Italian Data Valley: our region is heavily investing in digital innovation with few parallels in Europe, with the goal of promoting both research institutions and skills designed to generate tomorrow's jobs, businesses and society.



WHO IS C-TECH TODAY

We are an Italian company based in San Pietro in Casale, a town in the metropolitan area of Bologna. This area, as well as the entire Emilia-Romagna region, represents a territory long known in Europe for its tradition and know-how in the production of high precision mechanical components.

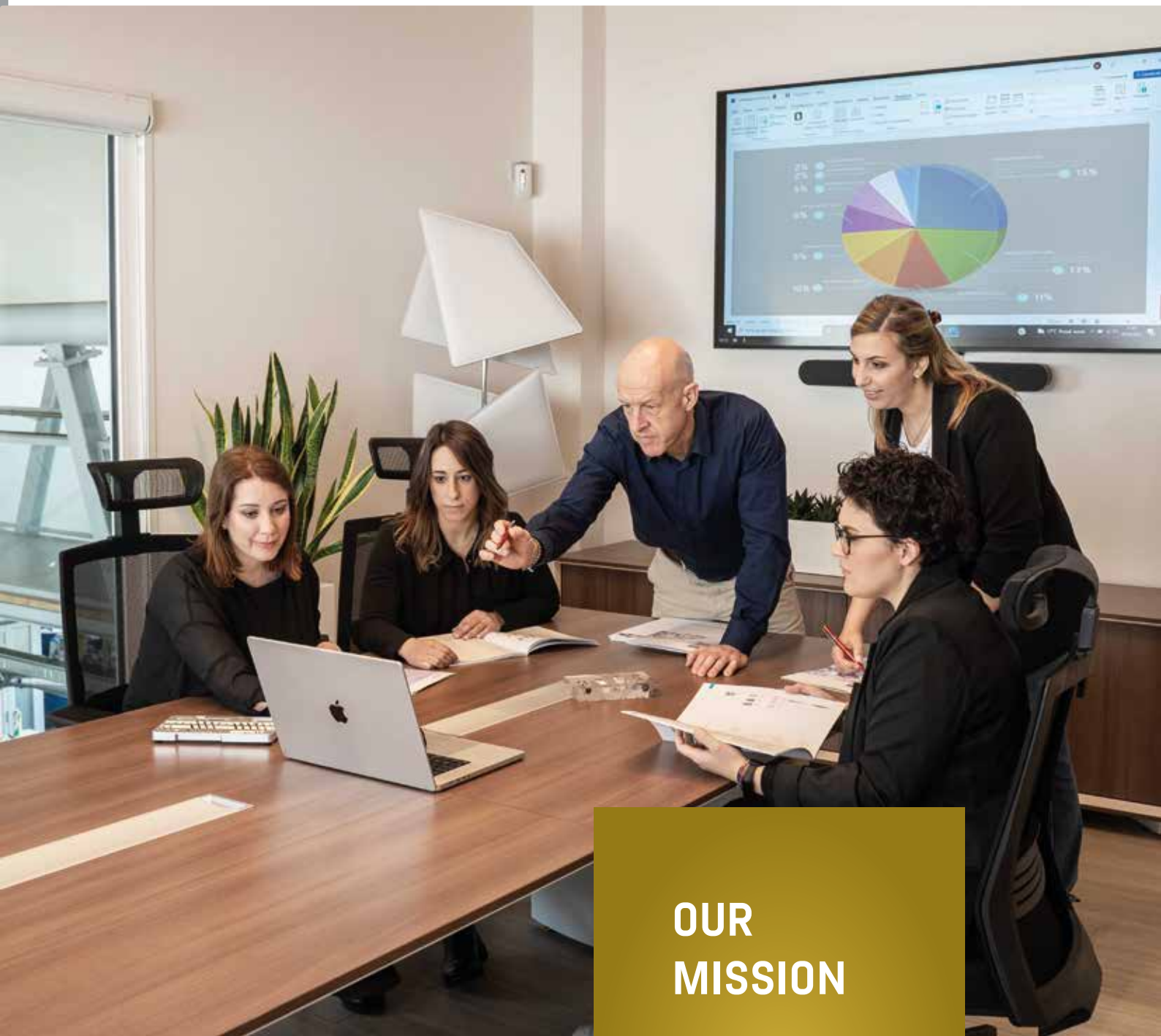
Our production facilities are among the finest in Europe and we use our expertise in implant design to make the best and most up to date implant systems and implant-based services. In addition to in house production, our facilities include a guided surgery planning, a milling centre and a training centre.

To back up our designs, we carry our research and long-term studies in the leading universities in Europe, while regularly publishing articles and studies on our products.

With our main markets consisting of Italy, Germany and China, we are certified and export our products to over 33 countries.

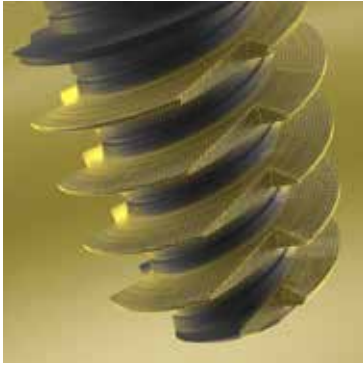
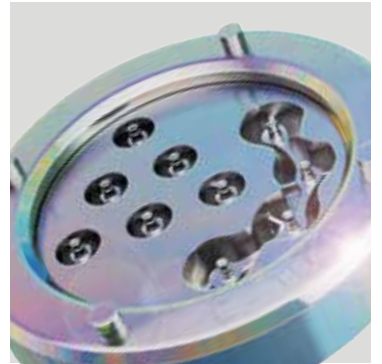
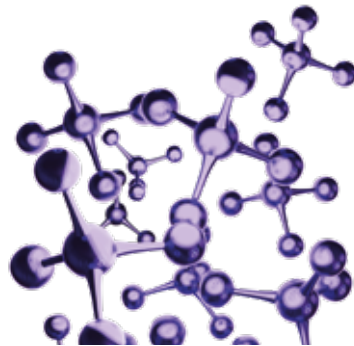
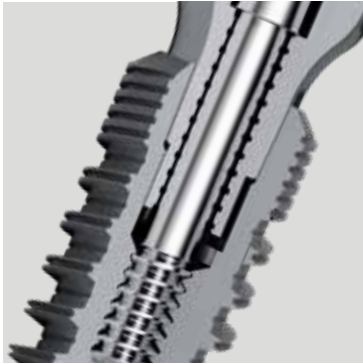
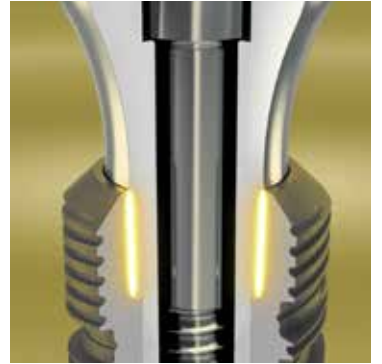
We also provide educational and training opportunities on a regular basis, both in our headquarters and abroad. This important service aims to address a critical aspect of dental and medical products: the required education to correctly use them.

For this reason, our training activities aim to help professionals in reaching their full potential, while providing the patient the highest level of care.



OUR MISSION

To provide the highest quality product, service, education and dental implantology solutions to the world's dental practitioners.



CPCONICAL
PLUS**EL**ESTHETIC LINE
Implant**ND**NARROW DIAMETER
Implant**SD**SMALL DIAMETER
Implant**MB**MONOBLOCK
Implant**GS**GUIDED
SURGERY**GTR**

CENTURY

OUR PRODUCTS

C-Tech offers a full line of dental implants – that consists of both conventional and mini implants – as well as a line dedicated exclusively to Bone regeneration.

Dental Implants

Our conventional implants – CP Conical Plus, EL Esthetic Line and ND Narrow Diameter – are an effective long-term solution with a restoring function, creating an attractive and natural smile while preventing bone degeneration. The implants are made of titanium, a biocompatible material which avoid any risks of irritation to the gums and provide the highest standard of treatment.

Our mini implants – MB Monoblock and SD Small Diameter – are small diameter implants produced in a titanium alloy classified as grade 5, which favors the osseointegration process. A win-win solution for both patients and professionals, for the competitive costs compared to traditional implants and for the ease of use and insertion, always guaranteeing an excellent result.

Bone regeneration

Century-GTR is the line of biomaterials for Guided Tissue Regeneration by C-Tech. It consists of a full range of both natural and synthetic bone substitutes, as well as collagen membranes.

- C-Bone: synthetic bone substitutes based on a new bio-mimetic nano-structured hydroxyapatite of the highest purity;
- C-Bone X: natural bone substitutes of equine origin, whose excellent osteoconductive properties allow a rapid and complete osseointegration of the grafts;
- C-Membrane: resorbable membranes for the protection of the implantation site from soft tissue, based on highly purified type I atelocollagen of equine origin.



WARRANTY

All C-Tech Implant lines – EL Esthetic Line, ND Narrow Diameter, MB Monoblock and SD Small Diameter – are designed with superior mechanical properties and absolute biocompatibility of all components.

Normal oral hygiene and regular dental check-ups will ensure that the duration of our implants, provided they are inserted correctly, will last a lifetime.

For this reason, we have always been able to offer a 10-year warranty on all our implants. The only exception is the EL Esthetic Line, which actually offers a lifetime warranty.

Should the implant – or part of it – be rejected or fail, we will replace such part free of charge in exchange for the failed part itself, its lot number and an explanation of the failure.

For practitioners, the warranty process requires that the failed implant be returned to the company, as well as the completion of the warranty form.



PROSTHETICS

C-Tech offers a wide range of prosthetics, which can be customized thanks to the C-Mill/CAD-CAM centers. Moreover, in implant lines with multiple diameters, the connection remains the same.

We are thus able to meet every type of dentist's need, using biocompatible materials such as zirconium, titanium, PEEK and chrome cobalt.

GUIDED SURGERY

Our C-Tech/C-Guide guided surgery concept is a complete system, which offers full guidance for the 4 diameters of the EL and ND implant families, providing depth, position and prosthetic orientation for all implant lengths.

The well proven EL system in combination with C-Guide delivers precision, predictability and long-term esthetic success. C-Guide planning can be done through all the major implant planning systems.



C-MILL/CAD-CAM

Operated by in house dental technicians and production engineers, the C-Mill center is able to work with all established dental material formats – zirconium, titanium, PEEK and chrome cobalt – from initial scanning to final try-in.

After the initial data acquisition phase of the STL file, the virtual prosthetic components are transferred to the milling machine and the physical part is produced. During the Quality Control phase, the resulting part is checked and adjusted for a perfect fit. Finally, all the goods are shipped out with full traceability of the work.





OUR KITS

Our complete kits cover both traditional and guided surgery. In our catalogues there are also planning kits to help in the design of the case, besides kits provided for the prosthetic part.





PRODUCTION

C-Tech products are manufactured, treated and packaged in our own 1,500 square meter production plant, where our constant scientific research has the aim of guaranteeing our customers a safe, reliable and quality product.

All the production process is kept under one roof and is all governed by the highest-level standards in the European Union, with regular independent audits that aim to guarantee its compliance with strict safety guidelines.

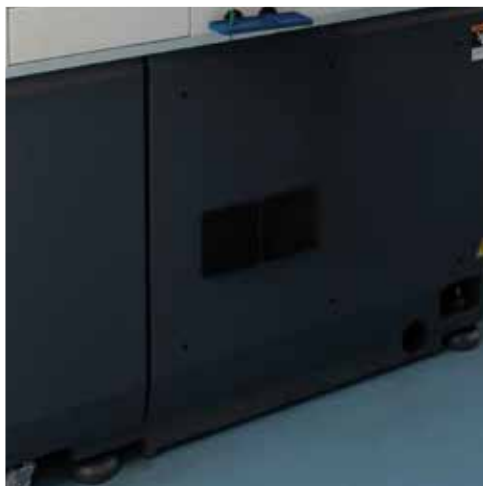
The plant is endowed with the finest Swiss CNC lathes, computer monitored packaging and tracing systems, quality control centers and a design department.

Our strength today is represented by the ISO Class 6 clean room, a structure that allows us to complete the production process without the need for further external steps, monitoring the entire production chain up to its sterilization and shipment.

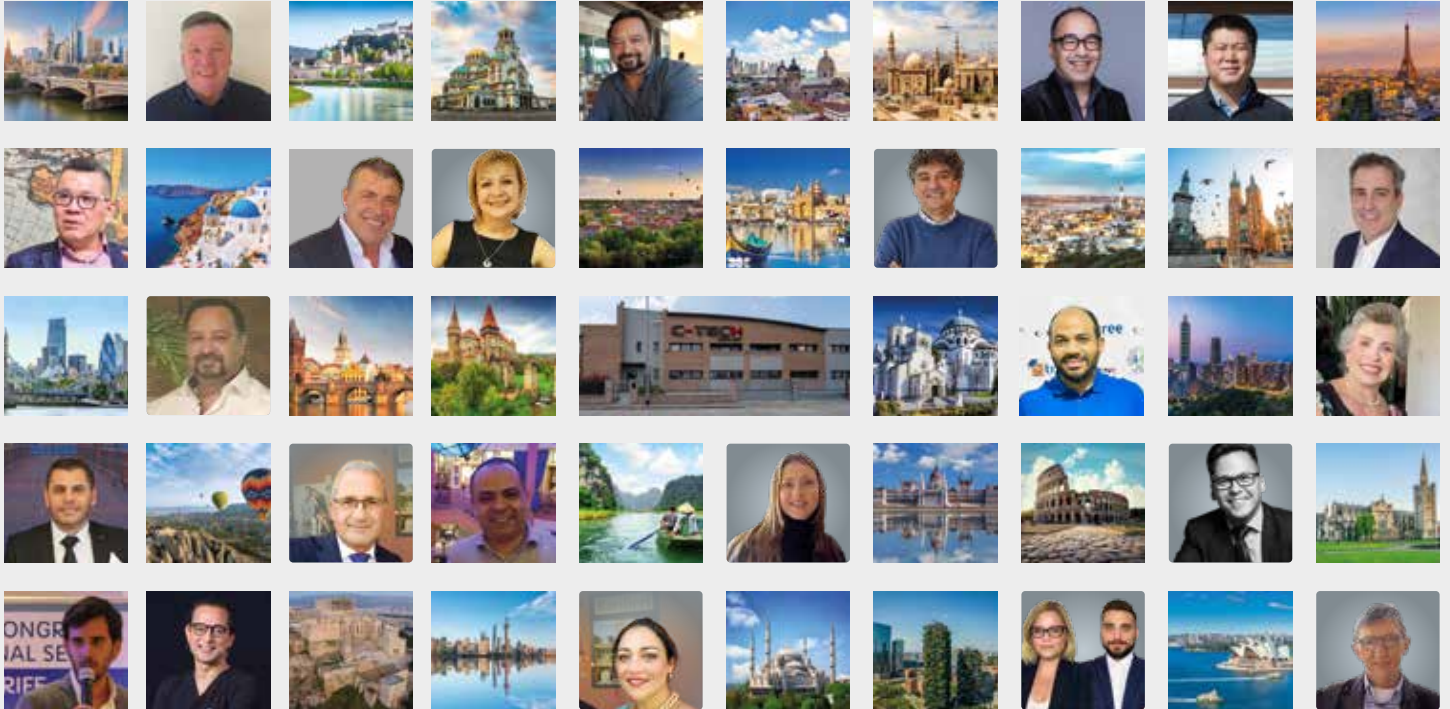












GLOBAL PRESENCE

The growing success of our products has projected C-Tech onto the international stage, consolidating our presence in an ever-expanding network of professionals and clinical practices. Year after year, new markets recognize the reliability and innovation of our solutions, allowing us to steadily broaden our reach.

Today, our products are available in 35+ countries worldwide, a result that reflects both the trust of dental professionals and the strength of our partnerships. Beyond product quality, we stand out for our comprehensive after-sales services: C-Tech guarantees maximum customer support, while our certified distributors provide training and guidance to ensure the optimal use of our systems in daily practice.



CERTIFICATIONS

We were one of the first Italian companies to be certified in the dental implant sector and today we have an extensive number of European and international certifications.

Our dental implants are manufactured according to the highest quality standards for both the product and the production process, while frequent inspections by the most authoritative certifying bodies assure dentists and patients that the required standards are always met in each of our four production plants.

In fact, the certifications are specific to each country and attest to the compliance of the components' material quality and surface treatments, as well as precise manufacturing conditions. They are therefore essential for our implants to be sold and used in the most demanding markets.

The certifying bodies also monitor quality, safety, material biocompatibility, sterilization, traceability, durability and even product packaging.

C-Tech's Quality System is certified by the Italian Notified Body TÜV Rheinland Cert GmbH – one of the most authoritative certification body in Europe – according to the UNI CEI EN ISO 13485 standard relating to medical implant devices. Moreover, we have successfully earned SFDA certification for China, GOST R for Russia and TFDA for Taiwan.





COURSES AND EVENTS

One of the main activities of C-Tech consists in the realization of courses and events, as well as participation in international fairs.

Our frequent training courses, organized in Italy and abroad, are aimed at dentists and are intended to provide qualitative training – both at a basic and advanced level – on topics ranging from dental implantology to guided surgery, thanks to the presence of international speakers.

We provide also training moments for our partners to strengthen team building and collaboration in our network, especially in view of the launch of new products.





SCIENTIFIC PUBLICATIONS

On our website you will encounter a constantly updated selection of scientific publications and articles, published in major medical and implantology scientific journals.

The authors – who mainly deal with implant surgery and regenerative and reconstructive bone surgery – are internationally renowned doctors whose clinical cases aim to show the long-term stability of our implants, derived from the innovative cone Morse connection.

These publications allow to examine real cases of pathologies treated with state-of-the-art specialized products, as well as provide examples of practical applications and the analysis of all our implant lines.





MARKETING DEPARTMENT

Our Marketing department is oriented towards innovation and creativity, trying to provide the best contents to our customers, our partners, our social networks followers and our website users.

We try to convey the true essence of C-Tech in all our communication activities – be it on social media, events, customer service, website, newsletters, and so on – showing how our strength consists in our friendly approach and our commitment in providing excellent products and services to our customers.

SCIENCE MEETS PASSION





OUR TEAM

The C-Tech family strongly relies on teamwork, both among employees and distribution partners – to whom we never lack closeness and support, despite the hundreds of miles that often separate us.

We are a united, determined and active team, in which each component is fundamental, both when the quality of the individual must emerge or when we have to join forces to achieve common goals.

Our customers know that they can always count on excellent quality products, with fast delivery anywhere in the world, as well as on the speed of our customer service – each employee speaks at least three languages to best respond to the demands of the markets in which we are present.

We regularly organize our training courses on an international scale to meet with partners and customers, as well as corporate events at our new headquarters, where the beauty and passion of our land intertwines in a unique way with learning sessions on our products.

C-Tech strives to be a real experience for customers: they are considered an integral part of our family and we try to build a relationship with them that goes beyond commerce.

C-Tech is really a family where human relationships are considered essential to create a stimulating environment to give your best, helping to make it a place where Science meets Passion, every day.



English version



REV.07/08-2025

SCIENCE MEETS PASSION

C-TECH
CENTURY IMPLANT TECHNOLOGIES

Via Ravenna 382 – 40018 San Pietro in Casale (Bologna) - ITALY
Tel. +39 051 6661817 - info@c-tech-implant.com
www.c-tech-implant.com

Go to



c-tech-implant.com

Download



Last updated version
of this brochure

