

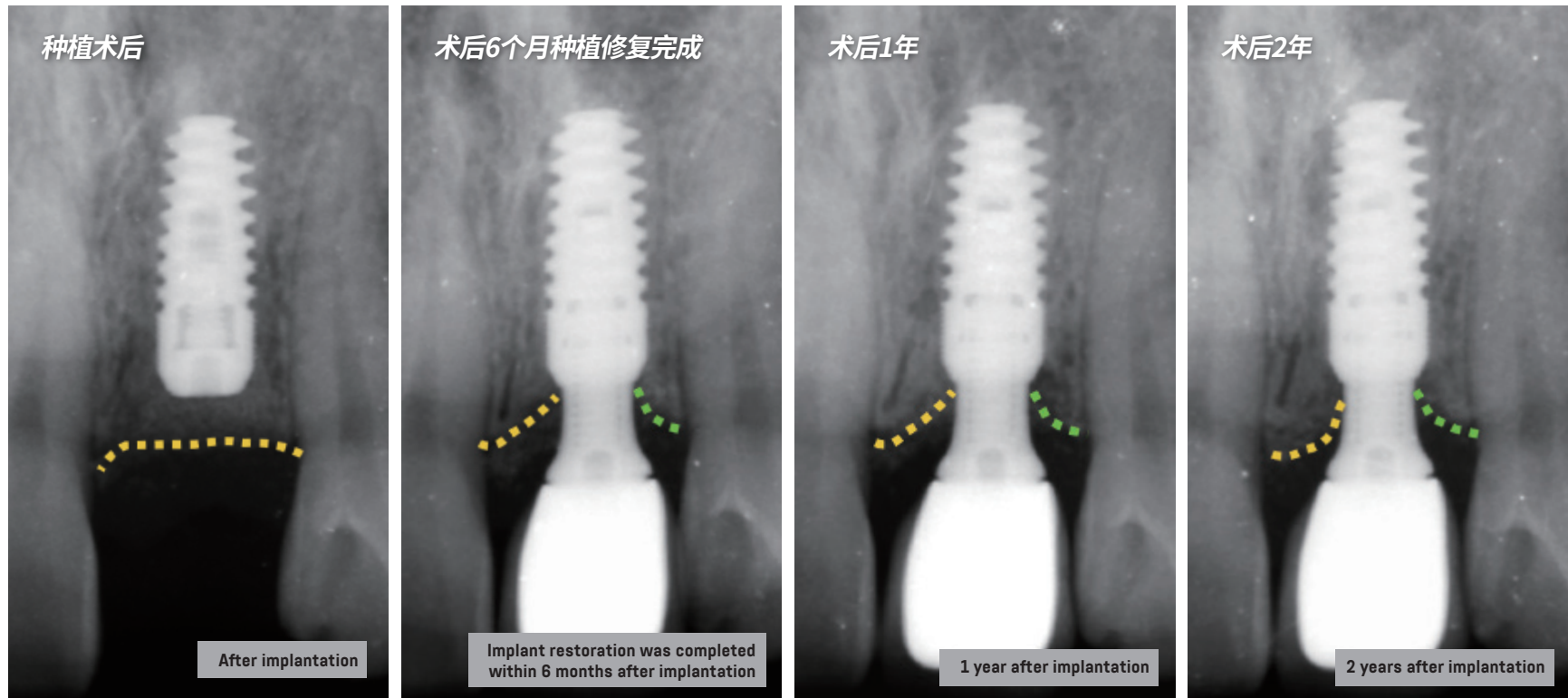
CC

CLINICAL CASE

EFFECT TRACKING OF BONE STABILITY

Doctor Peng Dong, the expert of tooth implantation in Peking University International Hospital and president of Beijing Hedu Stomatological Clinic Co., Ltd

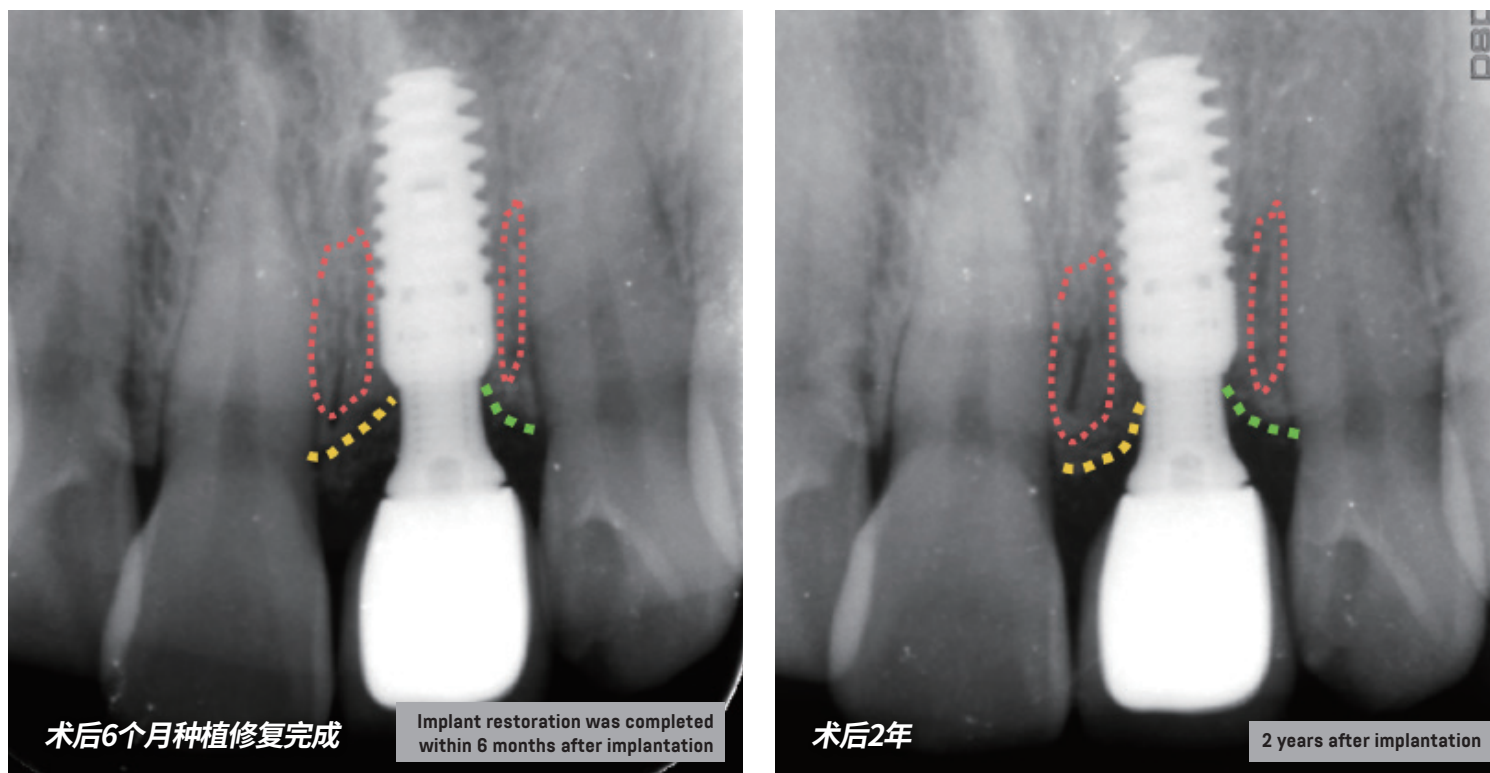
2-YEAR TRACKING OF THE CASE OF A SINGLE UPPER ANTERIOR TOOTH



RESULT 1: In 2-year continuous tracking after implantation, the bone height of the implant in the proximal-central area showed a progressive increase.

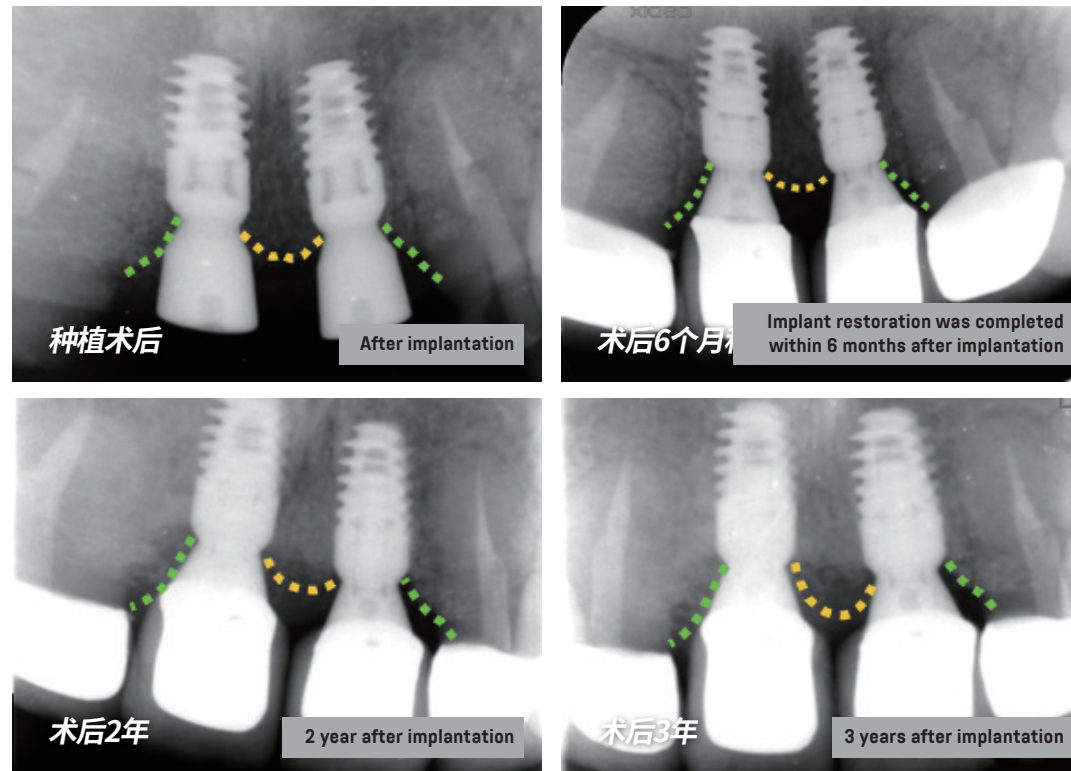
RESULT 2: In 2-year continuous tracking after implantation, the bone height of the implant in the distal-central area remained stable.

2-YEAR TRACKING OF THE CASE OF A SINGLE UPPER ANTERIOR TOOTH



RESULT 3: Comparing implant restoration completed within 6 months after implantation and the state 2 years after implantation, the bone densities of the implant in proximal-central and distal-central areas remained stable.

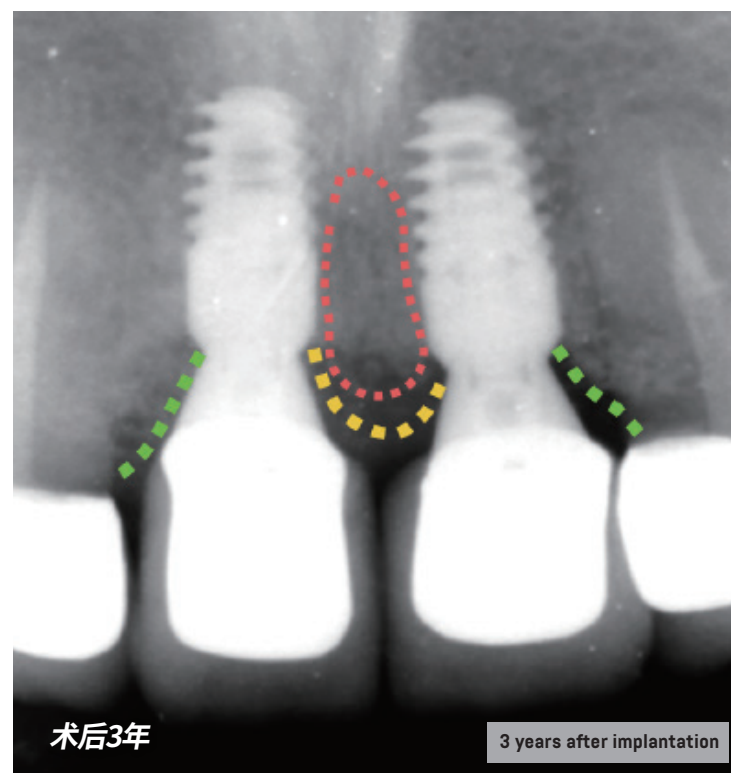
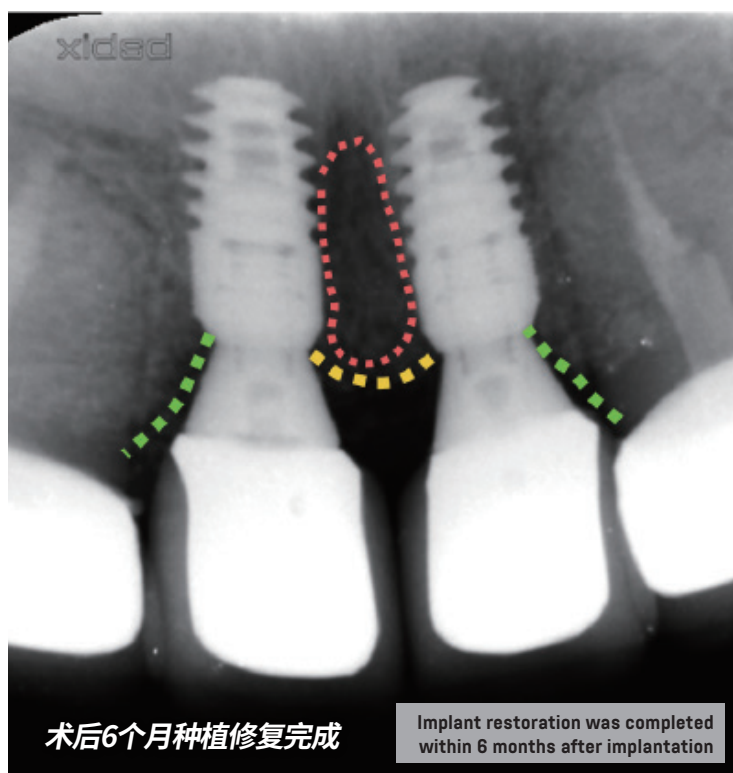
3-YEAR TRACKING OF THE CASE OF 2 UPPER ANTERIOR TEETH



RESULT 1: In 3-year continuous tracking after implantation, the bone height between two implants showed a progressive increase.

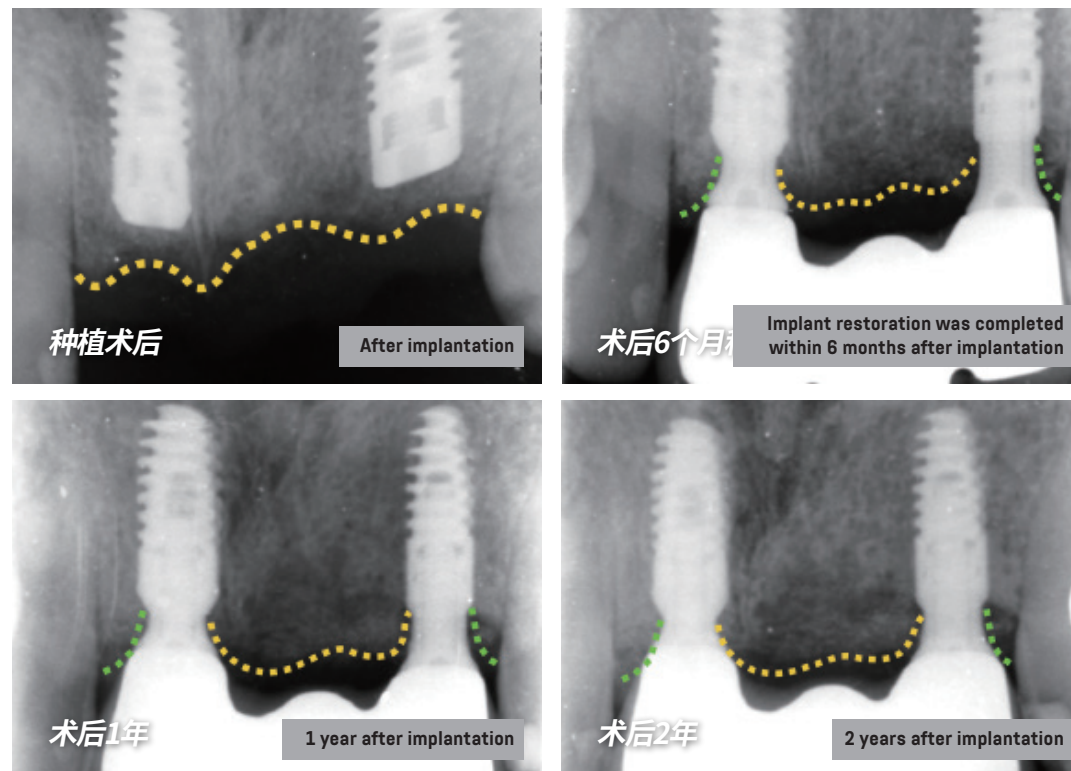
RESULT 2: In 3-year continuous tracking after implantation, the bone heights of 2 implants in the distal-central area remained stable.

3-YEAR TRACKING OF THE CASE OF 2 UPPER ANTERIOR TEETH



RESULT 3: Comparing implant restoration completed within 6 months after implantation and the state 3 years after implantation, the bone density between the 2 implants increased significantly.

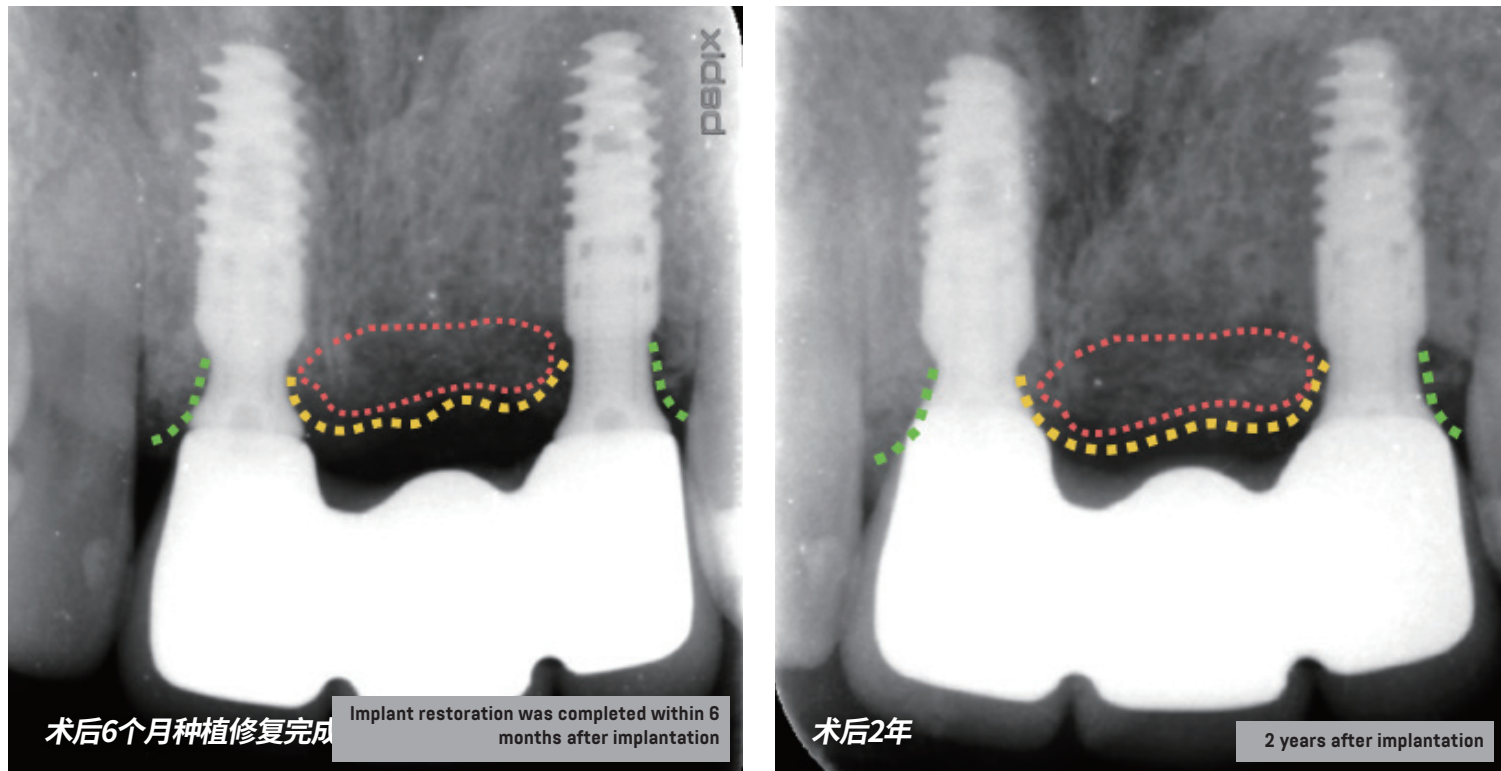
2-YEAR TRACKING OF THE CASE OF IMMEDIATE IMPLANTATION OF ANTERIOR TOOTH



RESULT 1: In 2-year continuous tracking after implantation, the bone height between two implants showed a progressive increase.

RESULT 2: In 2-year continuous tracking after implantation, the bone heights of 2 implants in the distal-central area remained stable.

2-YEAR TRACKING OF THE CASE OF IMMEDIATE IMPLANTATION OF ANTERIOR TOOTH



RESULT 3: Comparing implant restoration completed within 6 months after implantation and the state 2 years after implantation, the bone density between 2 implants showed a slight increase.